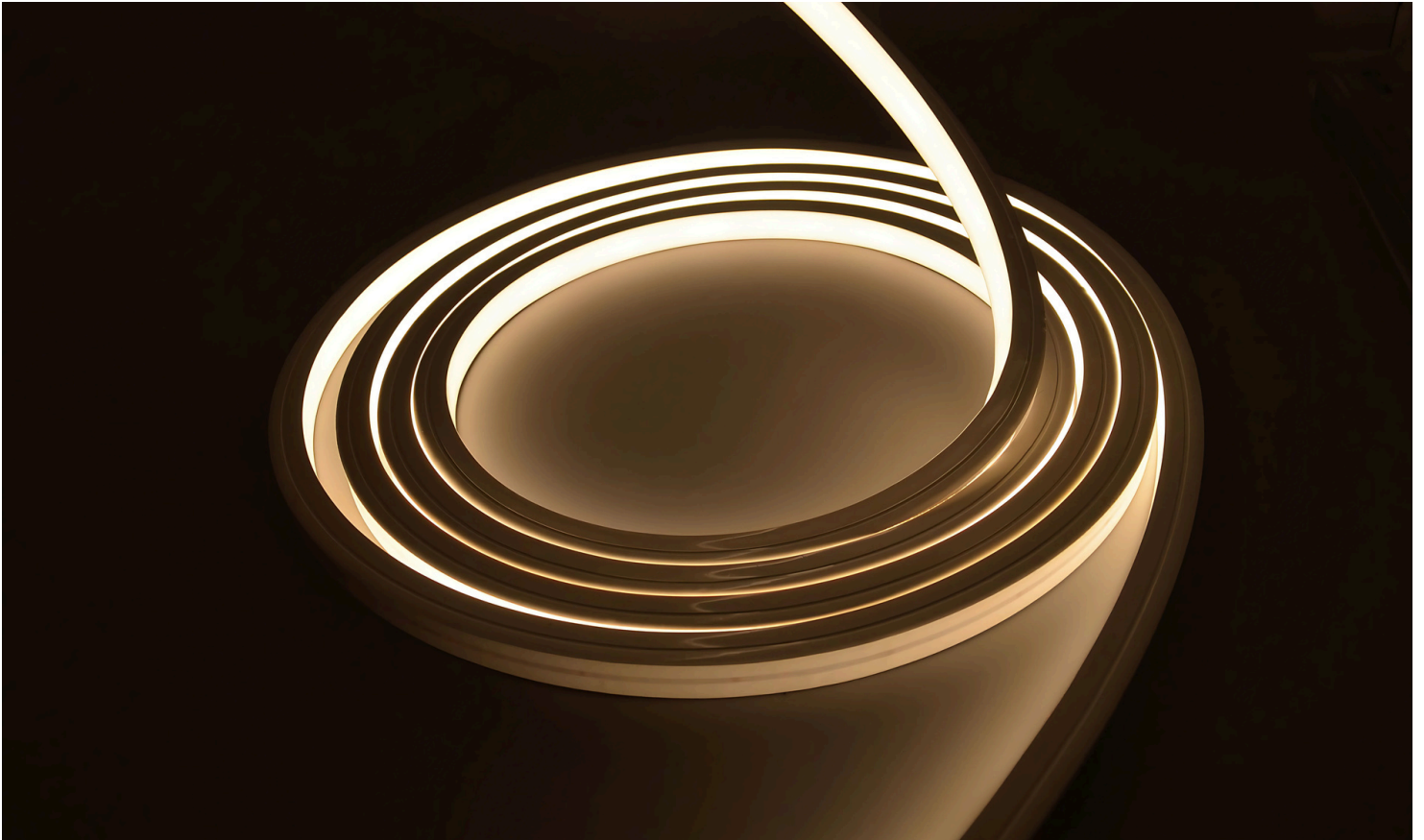


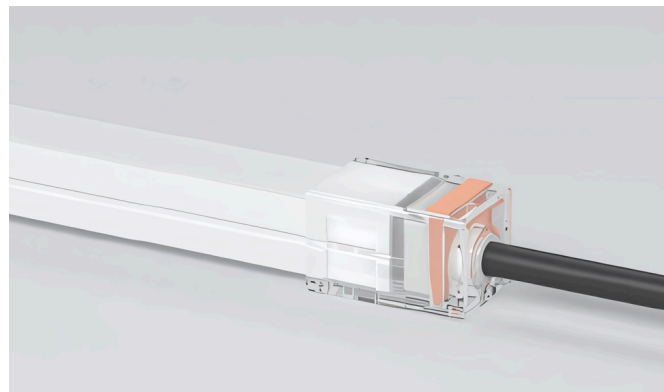
LED NEON FLEX SPECIFICATION

IP67 NEON 1615 24V TOP VIEW



IP67 NEON 1615 24V TOP VIEW

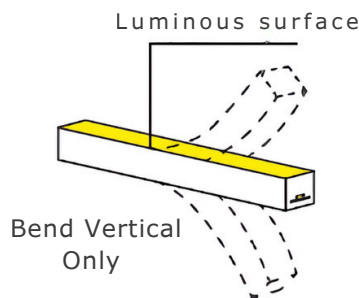
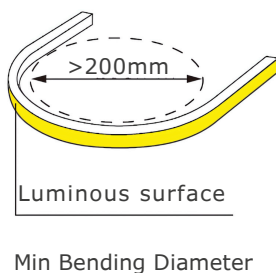
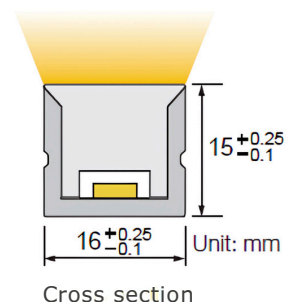
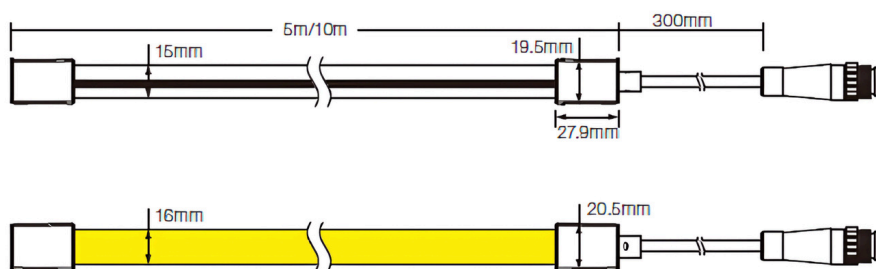
IP67 Neon Flex 1615 24v with resistance to salts, acids, alkalis, and UV, using dow chemical brand silicone rubber. Eco-friendly silicone with integrated extrusion process. Unique optical design for even, shadow-free illumination. Matte finished surface, dust resistant.



Not Suitable for Underwater Applications



DIMENSIONS & WATERPROOFING



Note :

Due to the tolerance of the production and electrical components, output value and electrical power can vary up to 10%

PRODUCT SPECIFICATION

Dimension (L x W x H) mm	300 x 5/10 x 15	Voltage (V)	DC24
IP Rating	IP 67	Power (W/M)	5 w/m, 10 w/m, 15 w/m
CRI	> 90	Efficacy@4000K	58.8lm/w, 57.3lm/w, 53.8lm/w
Storage Temperature	-25°C~ 60°C	LED PIN Temperature	Max.-65°C
MacAdam	3 Step	Ambient Temperature	Min.-25°C, Max (Table below)
Unit Length (mm)		Max. Ambient Temperature	55°C / 45°C / 35°C

SINGLE COLOR PARAMETERS

CCT (K)	Power (W)	Lumen (lm/m)	Efficacy (lm/w)	Max. Run Length (m)
2100K±150	10	460	46	17 (cc)
2400K±150	10	470	47	17 (cc)
2700K±150	10	550	55	17 (cc)
3000K±150	10	540	54	17 (cc)
3500K±200	10	585	58.5	17 (cc)
4000K ⁺⁴⁰⁰ ₋₂₀₀	10	575	57.5	17 (cc)
5000K ⁺⁵⁰⁰ ₋₂₀₀	10	570	57	17 (cc)
6500K ⁺²⁰⁰ ₋₆₀₀	10	575	57.5	17 (cc)
Red	10	240	24	18 (cc)
Green	10	550	55	17 (cc)
Blue	10	110	11	17 (cc)
Yellow	10	240	24	18 (cc)
Pink	10	225	22.5	17 (cc)

TUNABLE COLOR PARAMETERS

CCT (K)	Power	Lumen (lm/m)	Efficacy (lm/w)	Max. Run Length (m)
2700K	5	275	55	5 (cv)
6000K	5	295	59	5 (cv)
2700K+6000K	10	570	57	5 (cv)

RGB CC 13m (Lm/m)

CCT (K)	Power	Lumen (lm/m)	Efficacy (lm/w)	Max. Run Length (m)
R	3.7	53	14.2	13 (cc)
G	3.7	207	56	13 (cc)
B	3.7	31	8.3	13 (cc)
RGB	11	275	25	13 (cc)