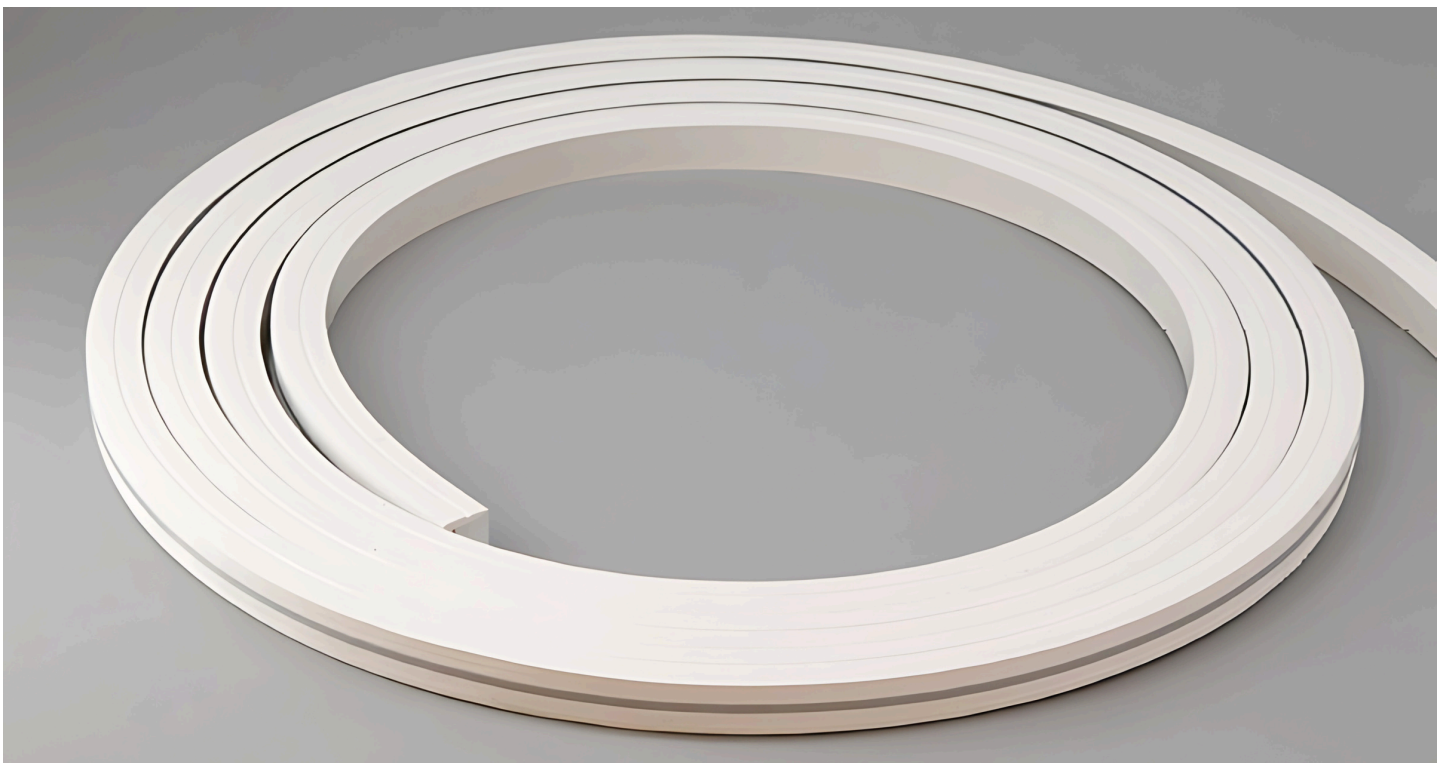


1010 LED NEON FLEX SPECIFICATION

IP67 LED NEON FLEX SIDE VIEW 24V



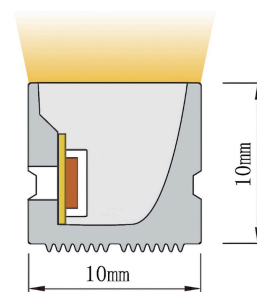
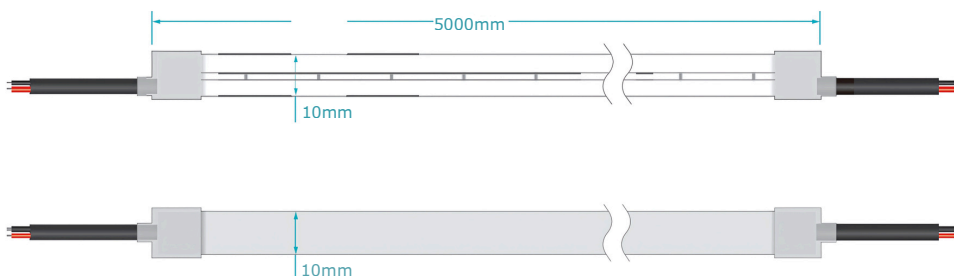
IP67 LED NEON FLEX SIDE VIEW 24V

IP67 UV and flame resistant construction and using high quality silicon. Extremely flat surface and profile and flush light emitting affect. Ultra flexible with 80mm minimum bending diameter. Customized different length available from 50mm - 5,000mm max.

Automated production, high reliability & long life span.



DIMENSIONS



Sectional View

Note :

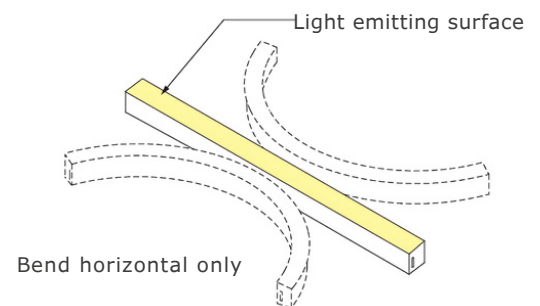
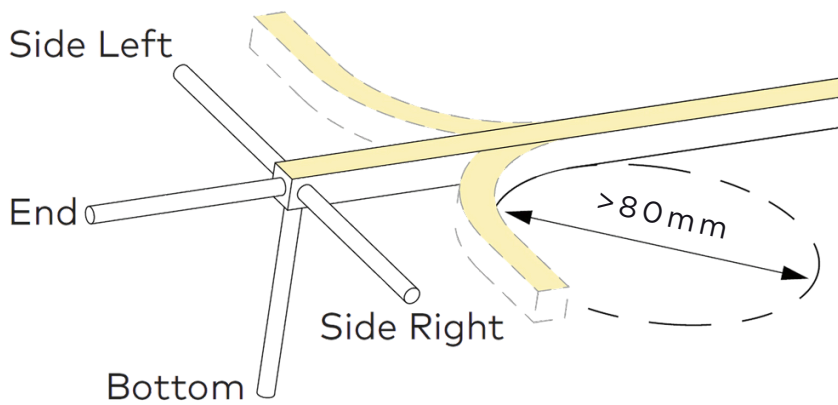
Safety Input voltage: DC 24V size of each section is 50mm, and cutting at black place.

The dimension tolerance is $\pm 0.2\%$ mm, width tolerance is ± 0.3 mm.

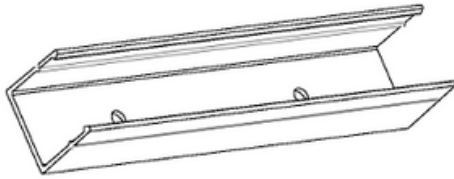
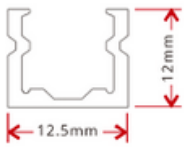
PRODUCT SPECIFICATION

Dimension (L x W x H) mm	5000 x 10 x 10	Voltage (V)	DC 24
IP Rating	IP 67	Power (W/M)	5w/m
CRI	>80 , >90	Color Temperature	2700K / 3000K / 4000K / 6500K
MacAdam	Step 3	Working Temperature	-20°C~45°C
LED Qty/m	160 LEDs	LED Type	SMD 2835
LED Distance	6.25mm	Light Efficiency $\pm 10\%$	105Lm/w, 118Lm/w
Min. Cutting LED	8 LEDs	Min. Cutting Length	50mm

OPERATIONAL GUIDANCE



ACCESSORIES & INSTALLATION (OPTIONAL)



W x H (mm)	Standard Length (mm)	Matching Neon Light Length (mm)	Screw Hole (mm)	Hole Number
12.5x12	455	500	Φ3.5	2
12.5x12	955	1000	Φ3.5	3
12.5x12	1455	1500	Φ3.5	4
12.5x12	1955	2000	Φ3.5	5

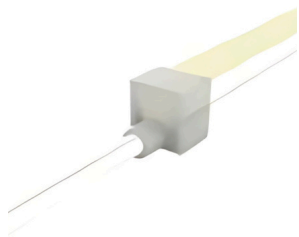
Mounting Channels :

- Aluminum
- Polycarbonate
- Other channels and mounting types available upon request.

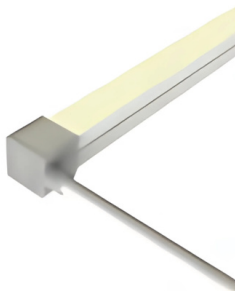
Note :

These are the mounting profile recommended cutting length, in order to matching the different length of Neon Light; Any customized length available too, such as 1.2m or 1.4m or 3.5m, and 5m length maximum; Each 0.3m length with 1 hole and 1 screw, and installation reference to the user manual.

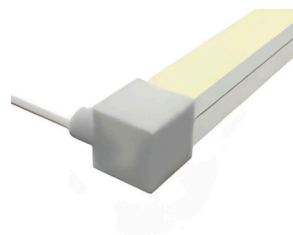
OUTLET WIRE WAY AND CAP



Linear Outlet
Plug Fit Silicone Cap



Right Outlet
Plug Fit Silicone Cap



Left Outlet
Plug Fit Silicone Cap



Bottom Outlet
Plug Fit Silicone Cap



End Cap
Plug Fit Silicone Cap



Linear Outlet
Injection Molded



Right Outlet
Injection Molded



Left Outlet
Injection Molded



End
Injection Molded



Bottom
Injection Molded